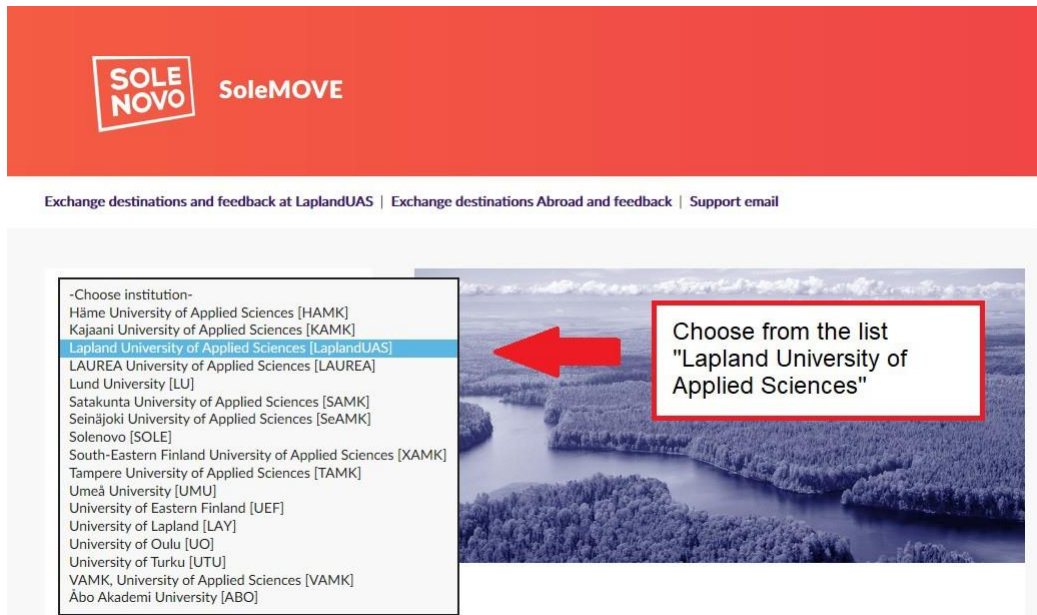
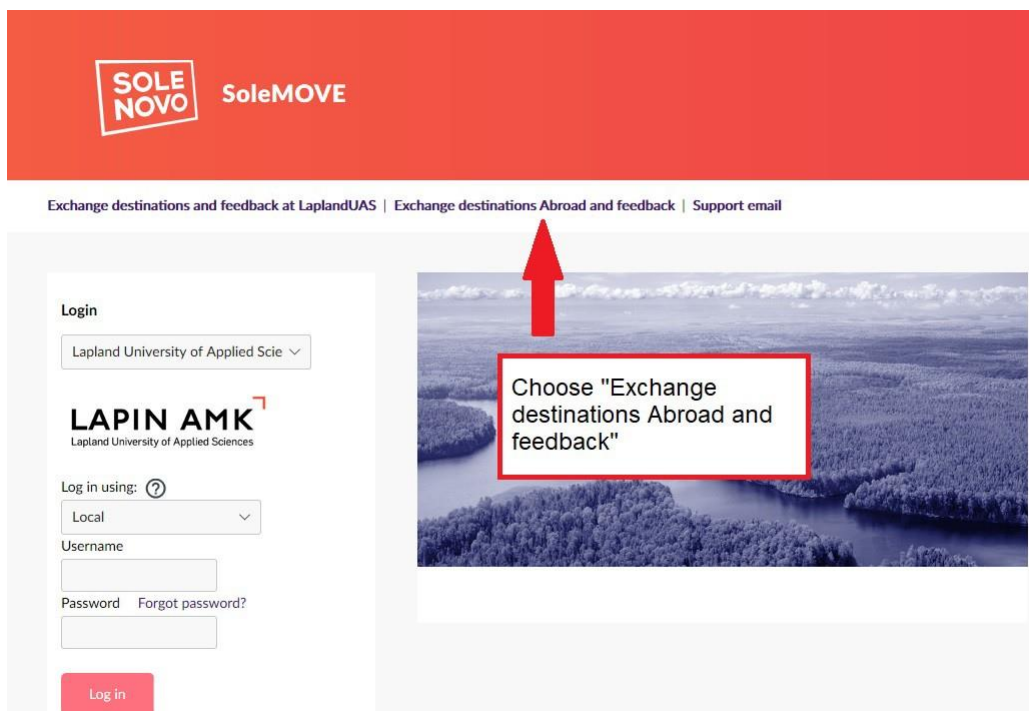


Instructions for searching partner universities and practical training places with feedback

1. Go to SoleMOVE: <https://saas.solenovo.fi/solemove/displ/en/public/nop/nop/nop>
2. Log in page:



- 3.



4.

### Going abroad?

Your home unit

Choose your study field

Click: Advanced search!

5.

### Going abroad?

Your home unit

You can narrow the search

Select a country

Select an institution

Type of exchange

EU subject area

Exchange program

Place is available

Application period

Study level

After you have clicked the search there should be a list of partner universities and you can also find the destination on the map. Check under the partner university name, that your study program is mentioned!

After exchange destination it is mentioned in which exchange program the partner belongs to, for example: Erasmus, Magellan, N2N, First or Bilateral, depending on which program concerned institution belongs.

After you have clicked one of the results, you will find the feedbacks under the partner university name. You can read all feedbacks by clicking “Feedback available” and then “Read more”.

Feedback available (5)